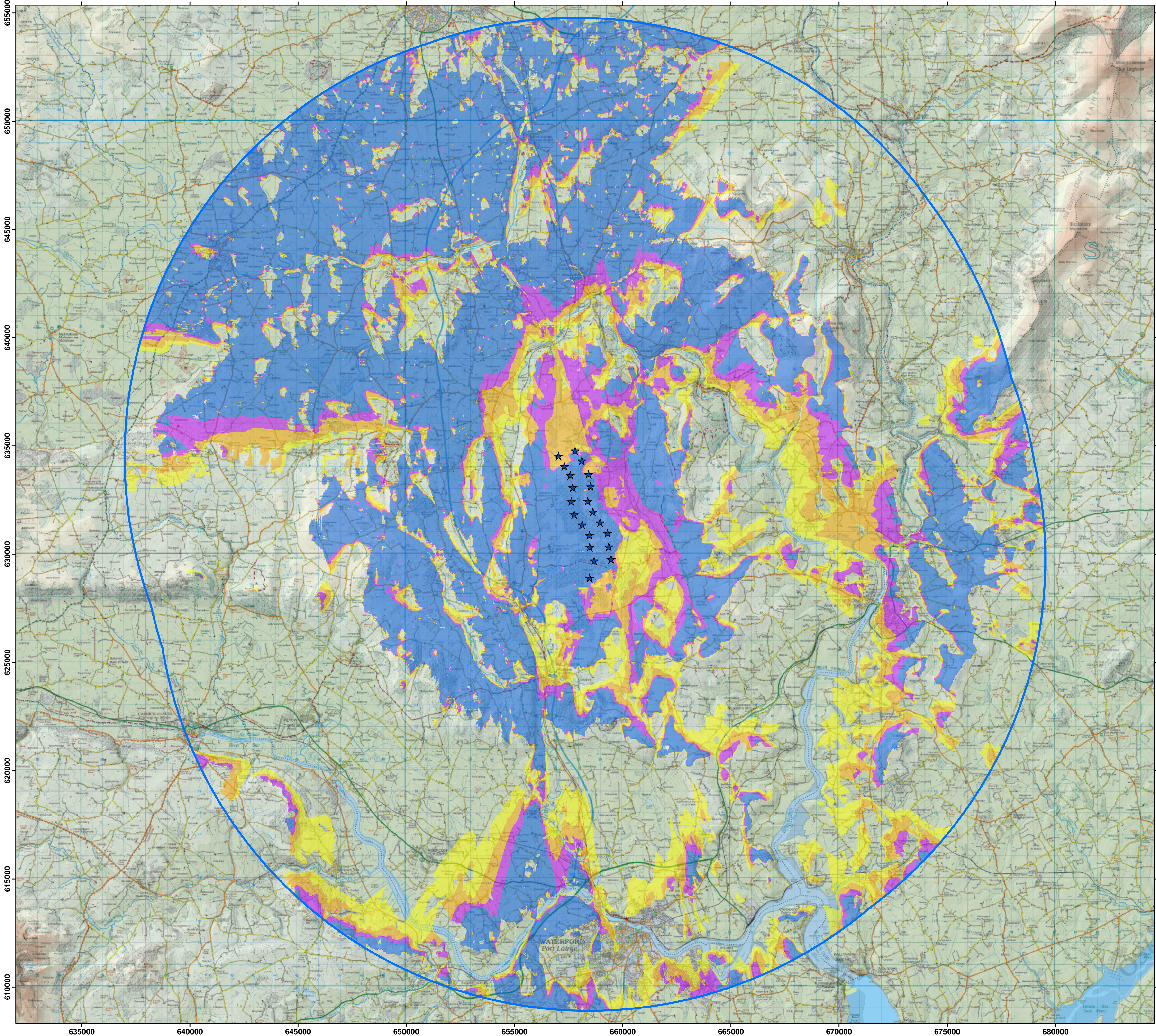


Castlebanny Wind Farm

Appendix 13.2: ZTV Maps

December 2020

ZTV (Zone of Theoretical Visibility) indicating the areas that have a potential view of Castlebanny Wind Farm turbines (110m Nacelle Height)



Proposed Turbines



No. Turbines Visible



1 - 5



6 - 10

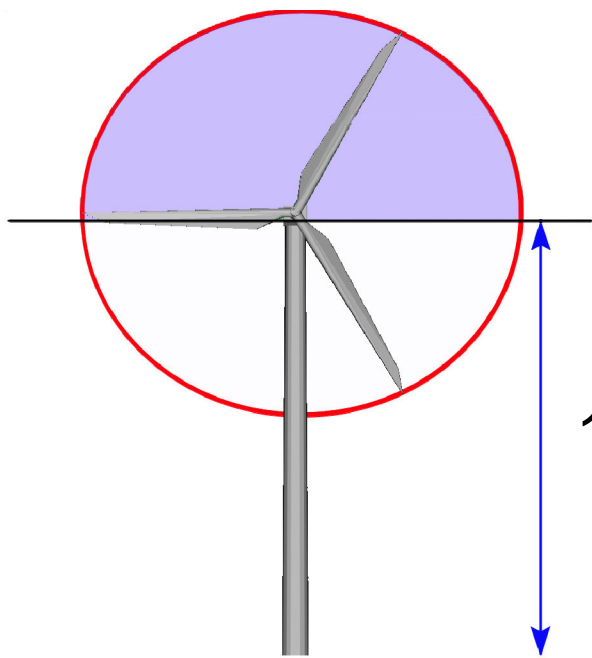
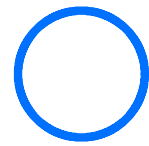


11 - 15



16 - 21

20km Extent



110m

This ZTV map has been calculated such that a turbines as been theoretically visible to observers in the surrounding landscape once there is an unobstructed line of sight to its nacelles.

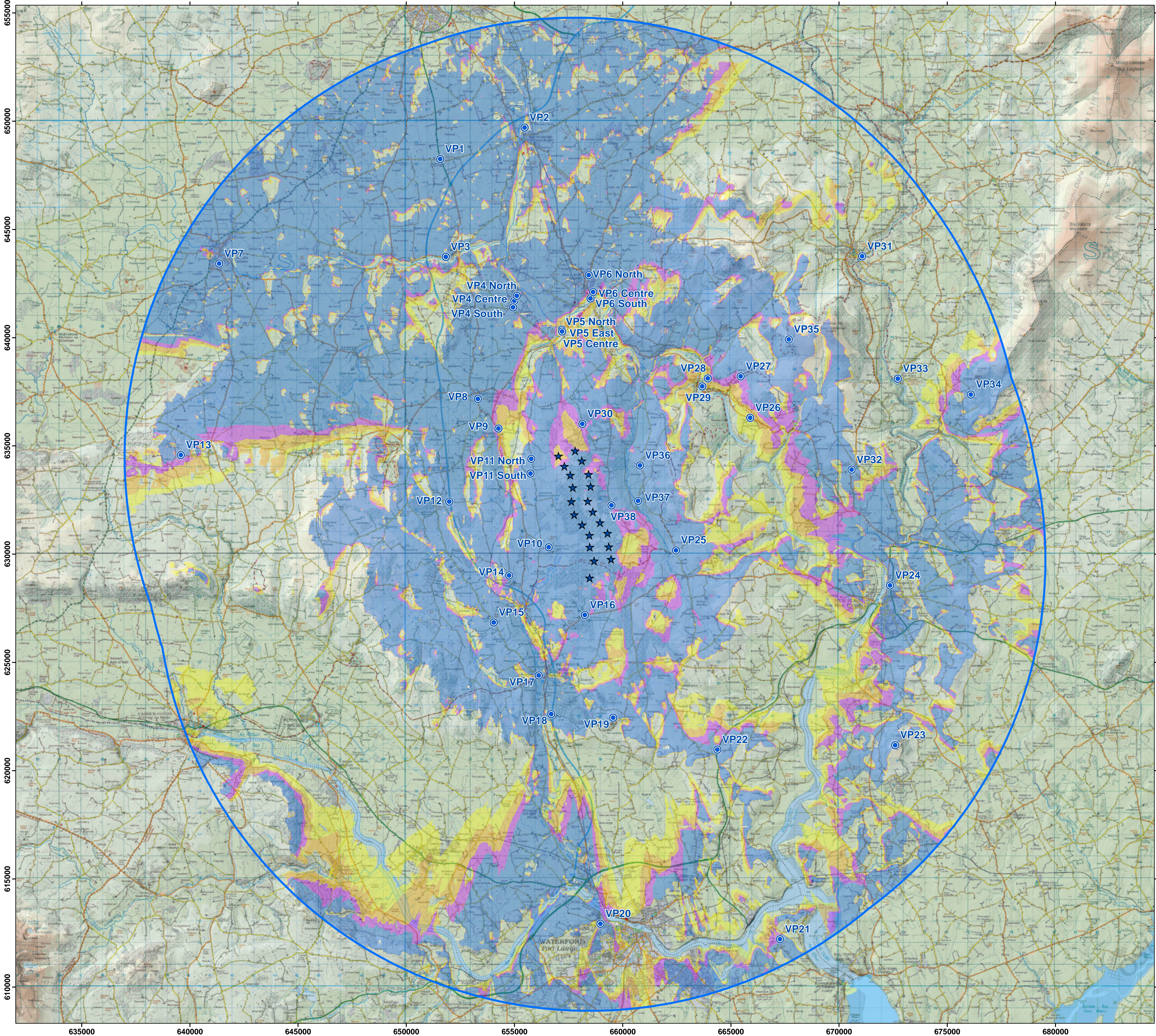
Observer Height assumed: 1.7m to eye-level height
Nacelle Height: 110m

Note: This ZTV map is calculated for landform screening only and does not take account of the significant screening effects of vegetation (hedgerows, trees) and buildings inherent across the study area.

Scale: 1 : 85,000 if printed @ A1 size



ZTV (Zone of Theoretical Visibility) indicating the areas that have a potential view of Castlebanny Wind Farm turbines (185m Blade Height)



Proposed Turbines



No. Turbines Visible



1 - 5



6 - 10



11 - 15

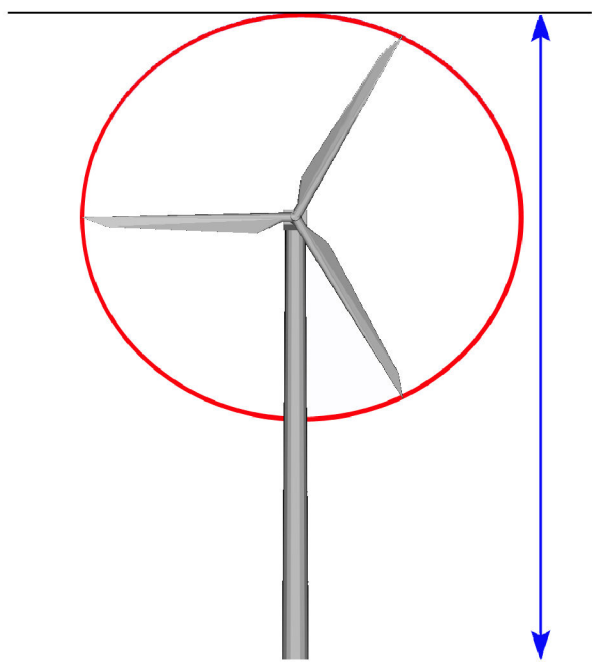
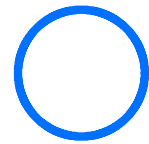


16 - 21

Photomontage Viewpoints



20km Extent



185m

This ZTV map has been calculated such that a turbines as been theoretically visible to observers in the surrounding landscape once there is an unobstructed line of sight to its blade tips.

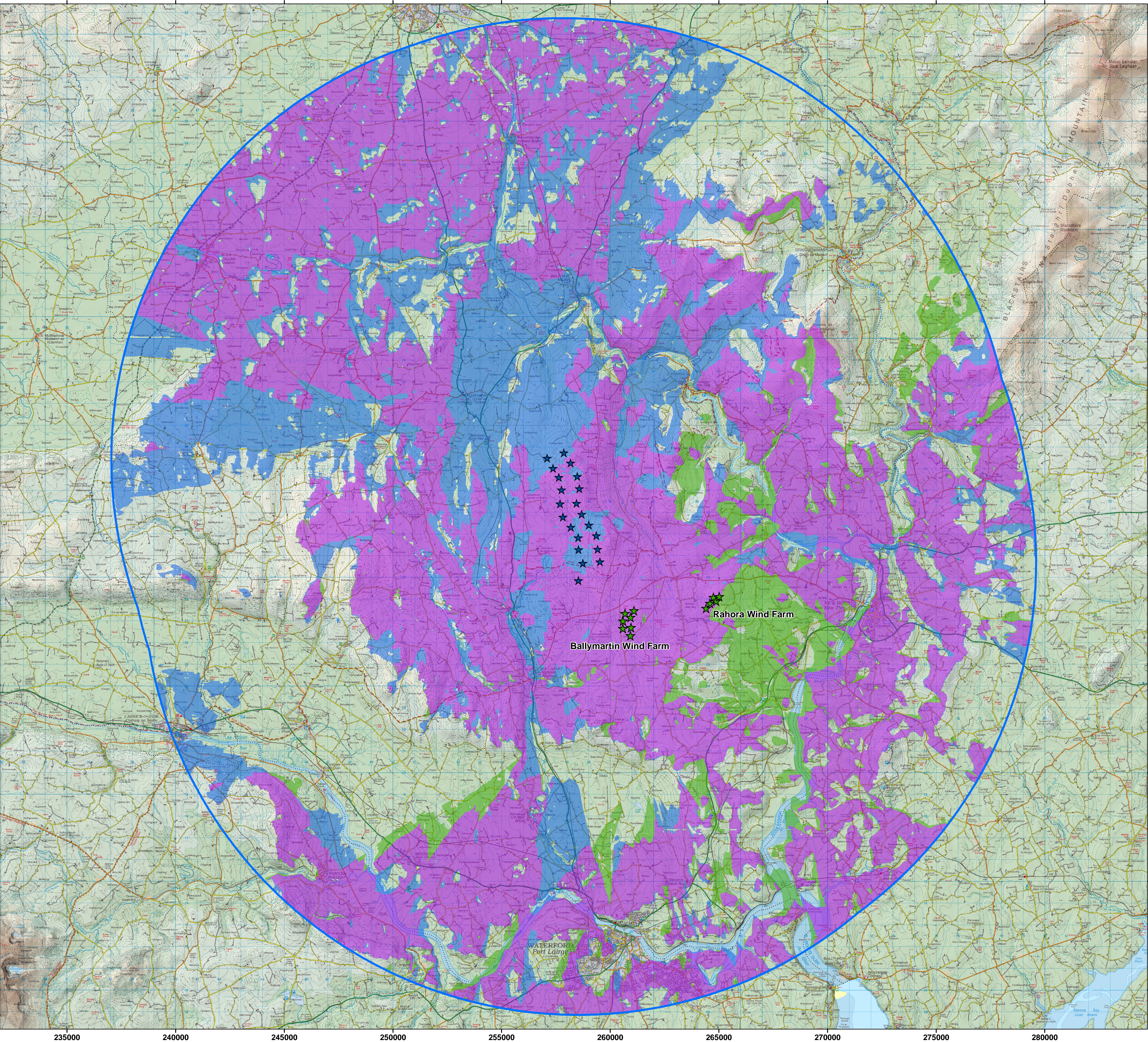
Observer Height assumed: 1.7m to eye-level height
Blade Tip Height: 185m

Note: This ZTV map is calculated for landform screening only and does not take account of the significant screening effects of vegetation (hedgerows, trees) and buildings inherent across the study area.

Scale: 1 : 85,000 if printed @ A1 size



ZTV indicating the cumulative theoretical visibility of the proposed Castlebanny Wind Farm in combination with all other wind farms in the study area



Proposed Turbines



Existing Turbines



Wind Farm Visibility

5.4%

Visibility of existing turbines only

43.8%

Visibility of Castlebanny turbines as well as the existing turbines

18%

Visibility of Castlebanny turbines only

32.8% of the entire study area to 20km will not have any view of the turbine blades of the proposed Wind Farm or that of any existing wind farms

20km Extent



This ZTV map has been calculated such that a turbine registers as been theoretically visible to observers in the surrounding landscape once there is an unobstructed line of sight to its blade tip.

Observer Height assumed: 2m to eye-level height
Blade Tip Heights: Variable

Note: This ZTV map is calculated for landform screening only and does not take account of the significant screening effects of vegetation (hedgerows, trees) and buildings inherent across the study area.